

DUM

collection



DUM is a Dutch label founded in 2008. DUM is different. The main objective of the DUM label is to provide spaces with distinctive items – to embellish hotel lobbies, workspaces, lounges and waiting rooms with outspoken human design with a domestic feel. Classics such as the Unkle chair and the Pleat lamps are part of the DUM collection, but there are also additions with the recognizable DUM-signature like the flexible and playfull Beech Connect table system and the Shift lamp. DUM is edgy, clean, playful, colourful and considerate.

Be inspired, Wiebe Boonstra, Marc van Nederpelt.



beech connect

the super flexible table system

Beech Connect is a super flexible table system based on the sturdy three legged Beech trestles. It may serve as a desk in a flexible workspace, as an impressive - 8 meter long - canteen table or as a simple elegant round table.

The system is very versatile with table tops in different colors and sizes. Beech Connect is also available in a stylish bar version, perfect for informal gatherings.



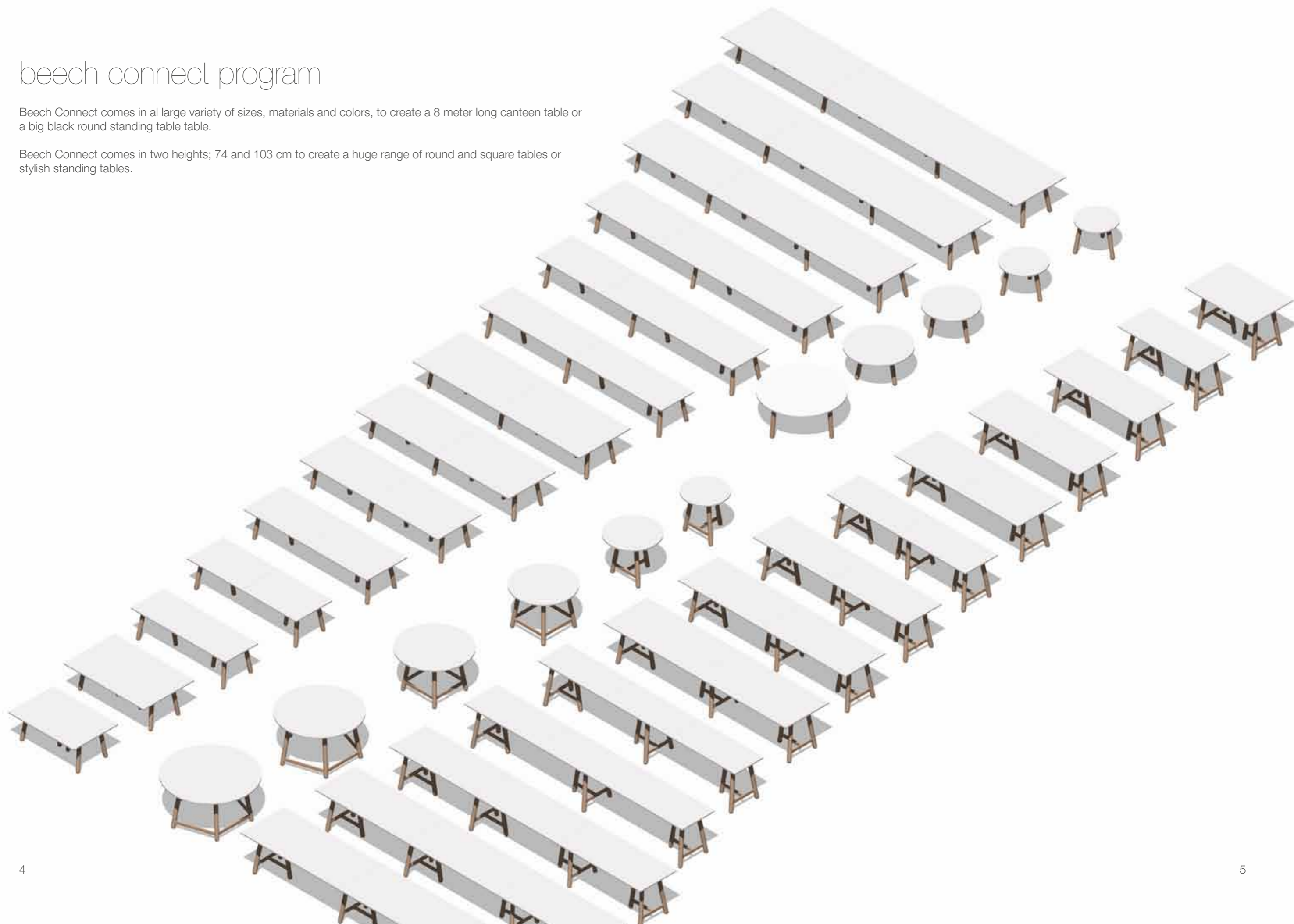
beech connect 71 rectangle



beech connect program

Beech Connect comes in a large variety of sizes, materials and colors, to create a 8 meter long canteen table or a big black round standing table.

Beech Connect comes in two heights; 74 and 103 cm to create a huge range of round and square tables or stylish standing tables.



beech connect 100 round



beech connect 100 rectangle



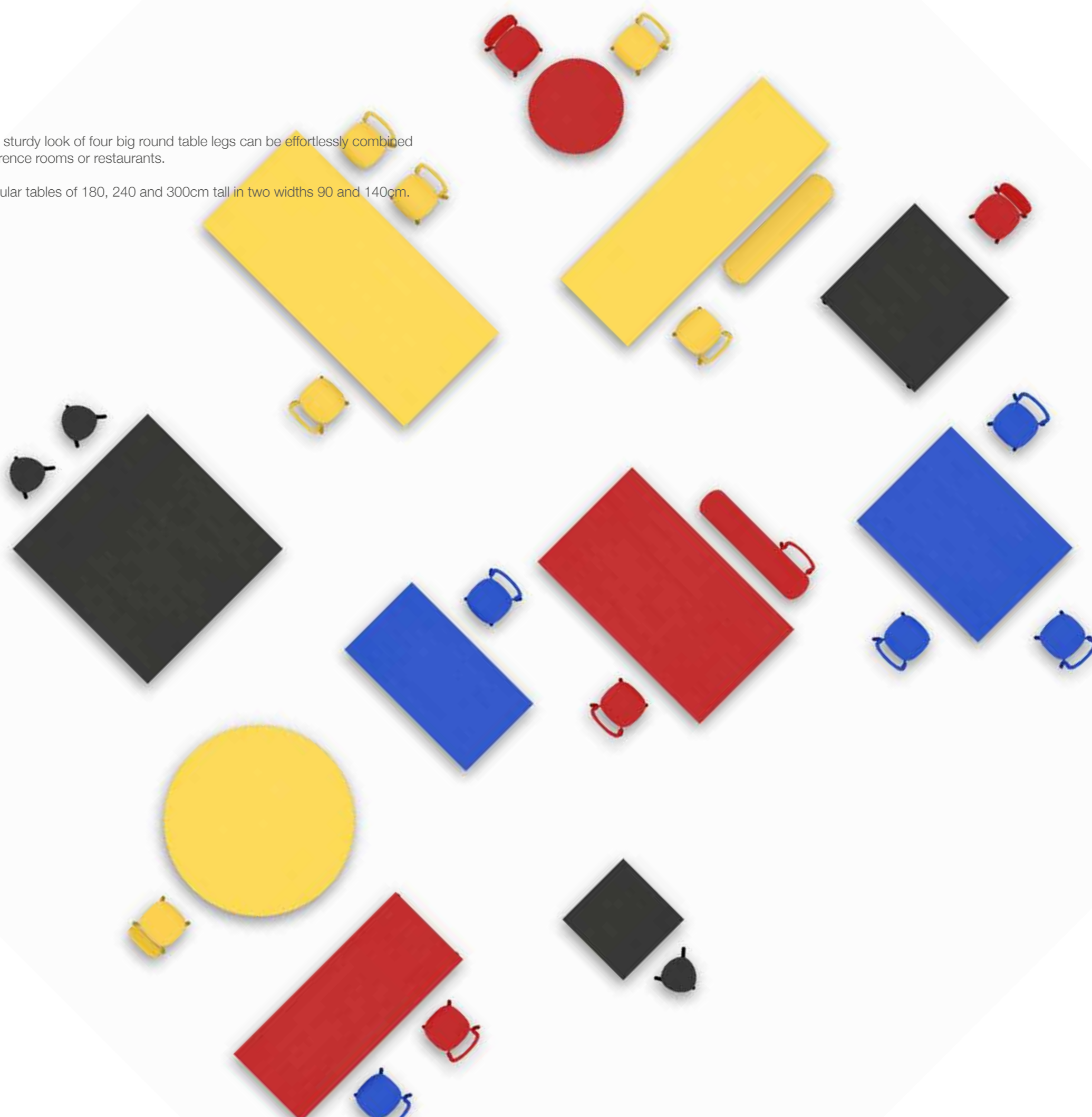
beech connect rectangle



beech basics

Beech Basics are tables with the unmistakable sturdy look of four big round table legs can be effortlessly combined with Beech Connect. Ideal for canteens, conference rooms or restaurants.

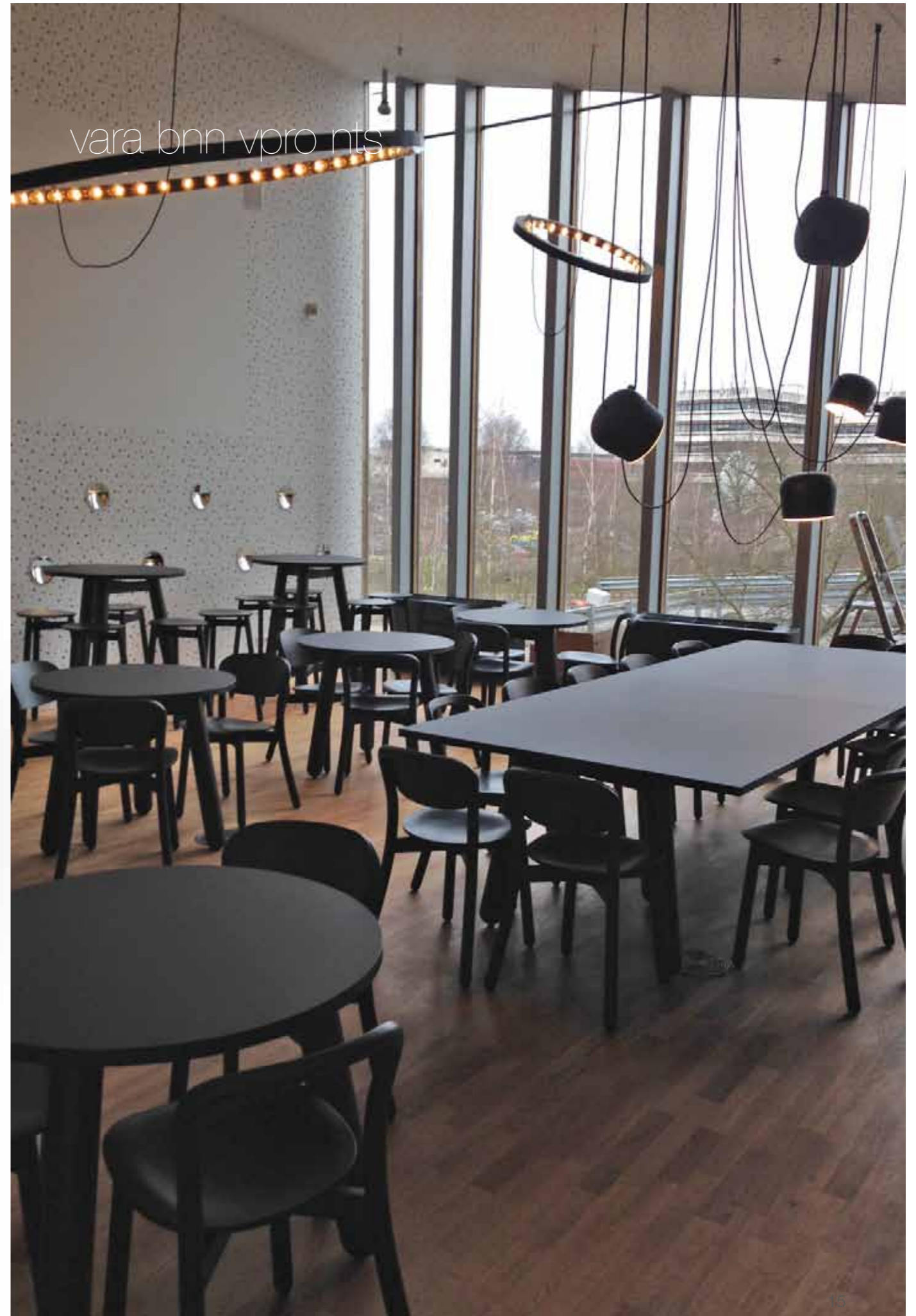
Square tables of 90, 140 and 180cm. Rectangular tables of 180, 240 and 300cm tall in two widths 90 and 140cm.



beech basics square



vara bnn vpro nts



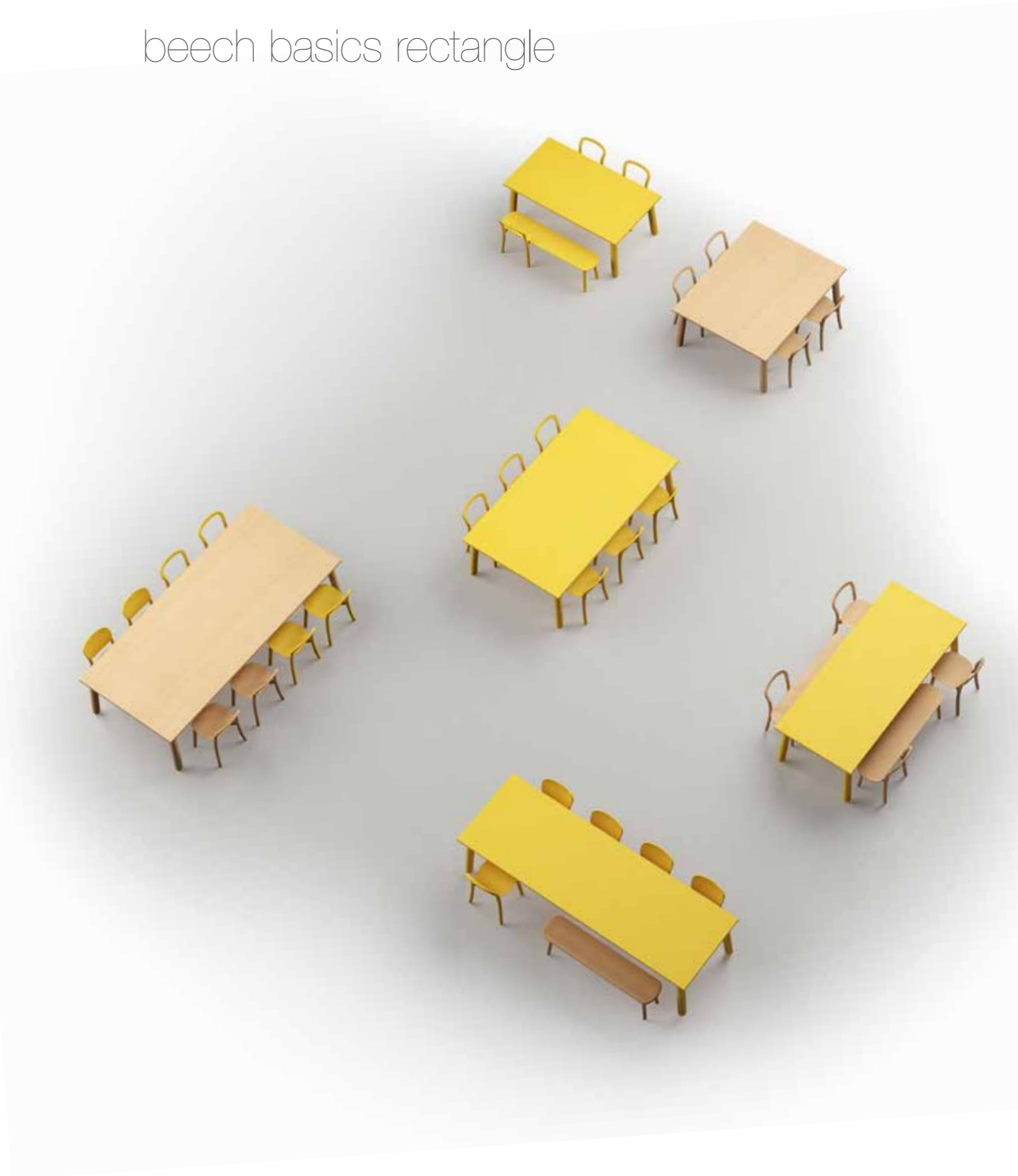


co-creation lab venlo



private residential lille

beech basics rectangle



beech chair

The Beech Chair is made from bended wood, has a refined backrest and a seemingly floating seat. The chair comes with a closed or open backrest, both surprisingly comfortable.



monoqi



forbo floorings



pandomo real estate



beech stool

Beech Stool is a three legged solid wooden stool with a stainless steel footrest. Subtle details such as a seemingly floating seat and rounded legs make this bar stool elegant and refined. Also available with back rests in two variations for exiting mix & match combinations.



beech private

Beech Private series was designed for breakout areas in an office environment or relaxation in home interiors. With its comfortable seats, goose feathered cushions and backrest upholstery the Beech Private creates a cosy shelter in open public space to make a telephone call, have a social meeting or just relax.



beech private



beech bench

The Beech Bench has the refined and comfortable backrest of the Beech Chair. A special kind of furniture which has a home in many places. The Bench comes with or without a backrest.



beech side

Beech Side is a small handy side table matching with all the other Beech items. Made from solid turned wood the Beech Side looks like a funny giant chess piece. The Beech Side comes in two heights.



dru cultuurfabriek



panatella

Like the name suggests this armchair is for relaxing. The curved armrests, the soft varnished ash wood endows this piece a soothing touch. Comfort is maximized through the use of goose down in the upholstery.



dru cultuurfabriek



wagner easy

The open and informal design of Wagner Easy creates a spacious and friendly feel. Wagner Easy is upholstered with Febrik knitted fabrics and two cushions with down feather filling. All Wagner furniture is made from solid french oak and available in many striking colors.



dividivi

Coffee table and side table. Organically shaped like a growing tree with branches. Elegant steel frame and tabletop design.



unkle+



The renewed classic Unkle+ easy chair system. More flexible and affordable than ever before. But it's classic features still remain; oversized, playful and relaxed with minimal detailing. Perfect for large spaces and big impact. Available in any width with incremental steps of 30cm. So it fits in every space or project you have in mind. Start creating your own super long bench or cosy love seat.

Purchased by the Stedelijk Museum Amsterdam





delay

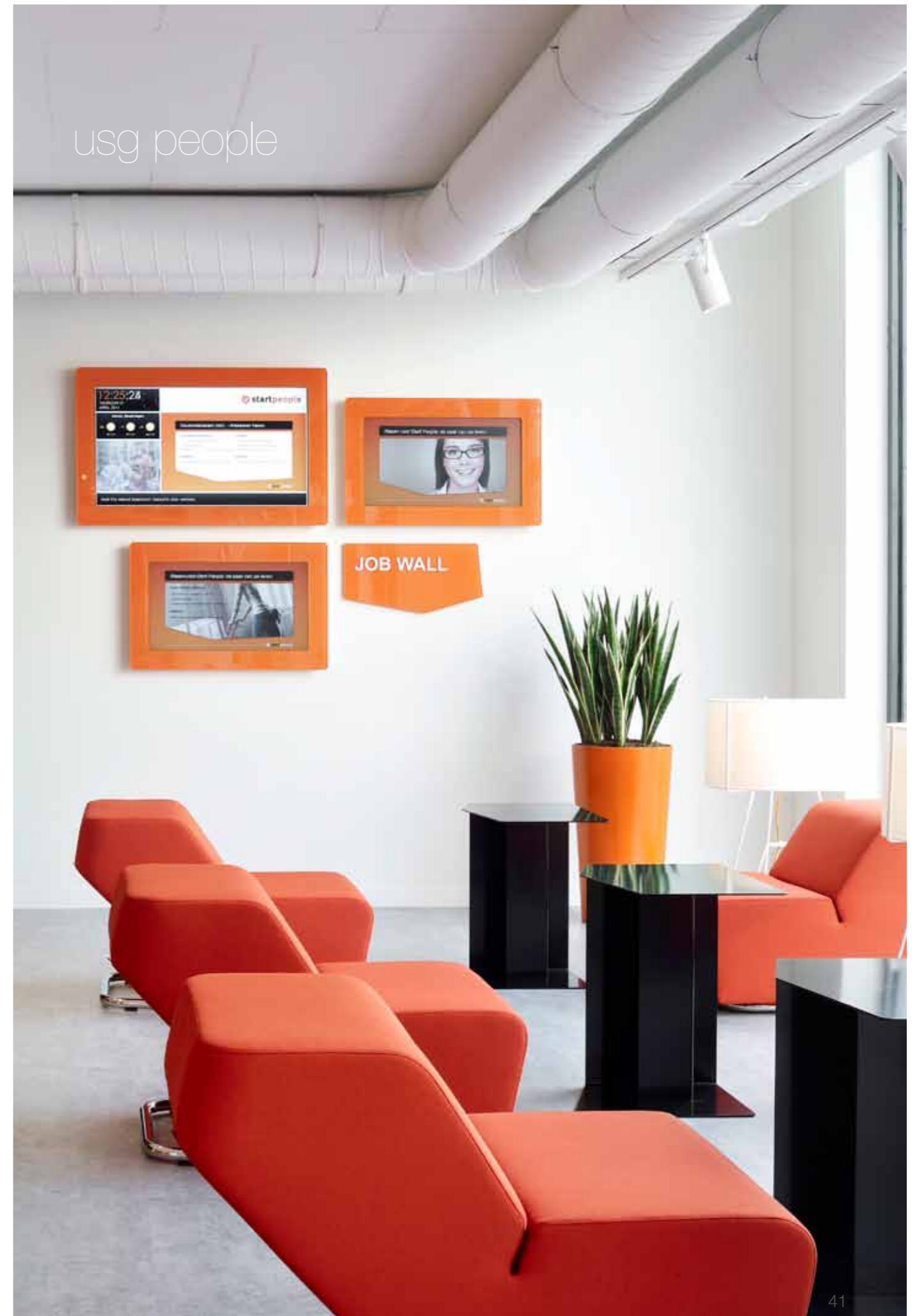
Somewhere in between a bench and a chaise longue for short or long stays. Designed for comfortably lying down (Delay) and carefree sitting up (Short Delay).



short delay



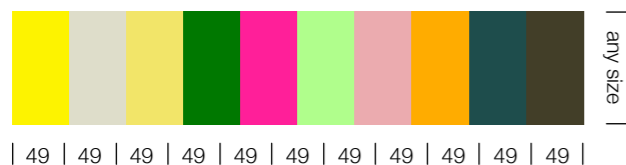
usg people





stripes

Stripes is a carpet-system in a range of 10 colours in 100% New Zealand wool designed by Fransje Killaars. Available in 55 colour combinations in almost any size. Each stripe measures 49 cm. With 10 colours the maximum width is 490 cm. All you have to do is select your favorite range of colour numbers and the desired length. Each carpet is fitted with an anti-slip backing and blind finished with cotton border.

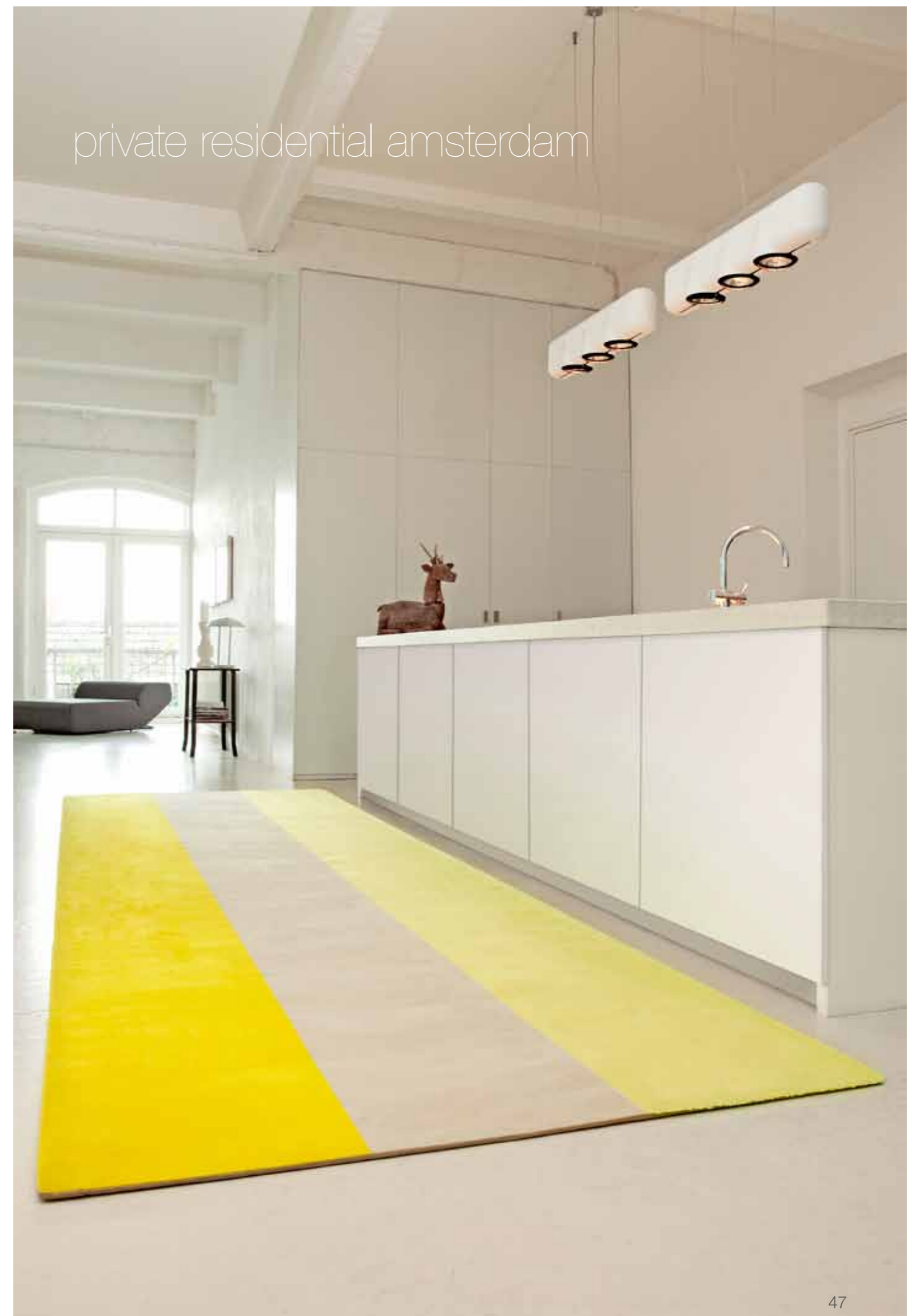


cassius

A leather punching bag. To let off steam, work out or simply look at. Handmade with supreme eco leather and strong stitching. Cotton filling, 1.50 meter and 50 kilograms. An essential for every office, waitingroom or public space.



private residential amsterdam



pleat suspension & floor

Pleat is a series of lamps in pleated fabric. The loose skirts made with this classical technique create exciting, elegant volumes. Both hanging and standing lamps are available in different sizes and colors.

Pleat floor 50 and 75L. right page: Pleat suspension 75, 75L and 50.



monopi



pleat detail



chiton

Chiton is a suspension lamp made from hand-pleated cloth. The inspiration for the lamp was found in the classic Greek Chiton dress which is made from one piece of fabric. The elegant shape of the lamp itself arises because the pleated fabric hangs loosely over a steel ring. Chiton is available in two sizes in both white and anthracite.

Chiton Large. right page: Chiton Small and Large anthracite



shift

Shift is influenced by contemporary architecture. The lamp consists of four subtly folded white boxes of sheet metal. These seemingly simple boxes create a beautiful and interesting effect when combined. Switched on Shift boasts an intriguing play of pleasant indirect flood light and asymmetric profiles.



king arthur

King Arthur is a new take on the medieval chandelier. A meticulous lighting fixture made from beautiful matte anodized aluminum. King Arthur is available in two sizes, 60 and 90 cm, both suspended with a firm black rope. Designed by our friend and talented designer Jesse Visser.





shift detail

headoffice:
DUMOFFICE
prinsengracht 486c
1017 KG amsterdam
the netherlands
+31 [0]20 489 0104
info@dumoffice.com
www.dumoffice.com

sales:
Brunia Interiors
laan van waalhaven 118
2497 GP den haag
the netherlands
+31 [0]70 415 2070
info@bruniainteriors.com
www.bruniainteriors.com

product development:
de jager product
bsm factory

photography/projects:
maarten van houten
courtesy of monoqi
marc maurer
osc+ steelcase
mayelle
studio niels™ broekbakema
hotze eisma

designers:
marc van nederpelt
jesse visser
martijn hoogendijk
wiebe boonstra
fransje killaars

copy editing:
zinmedia.nl