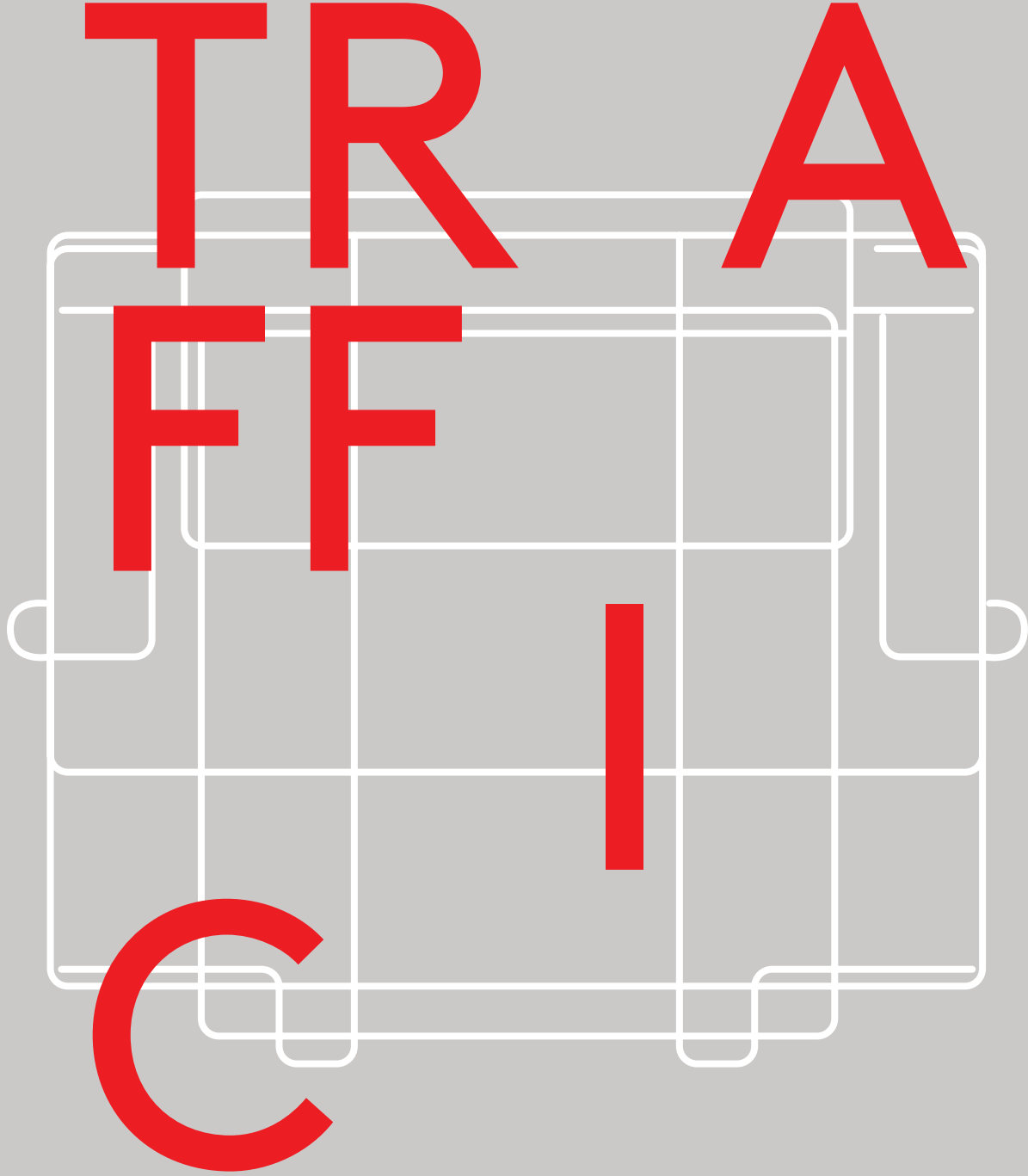
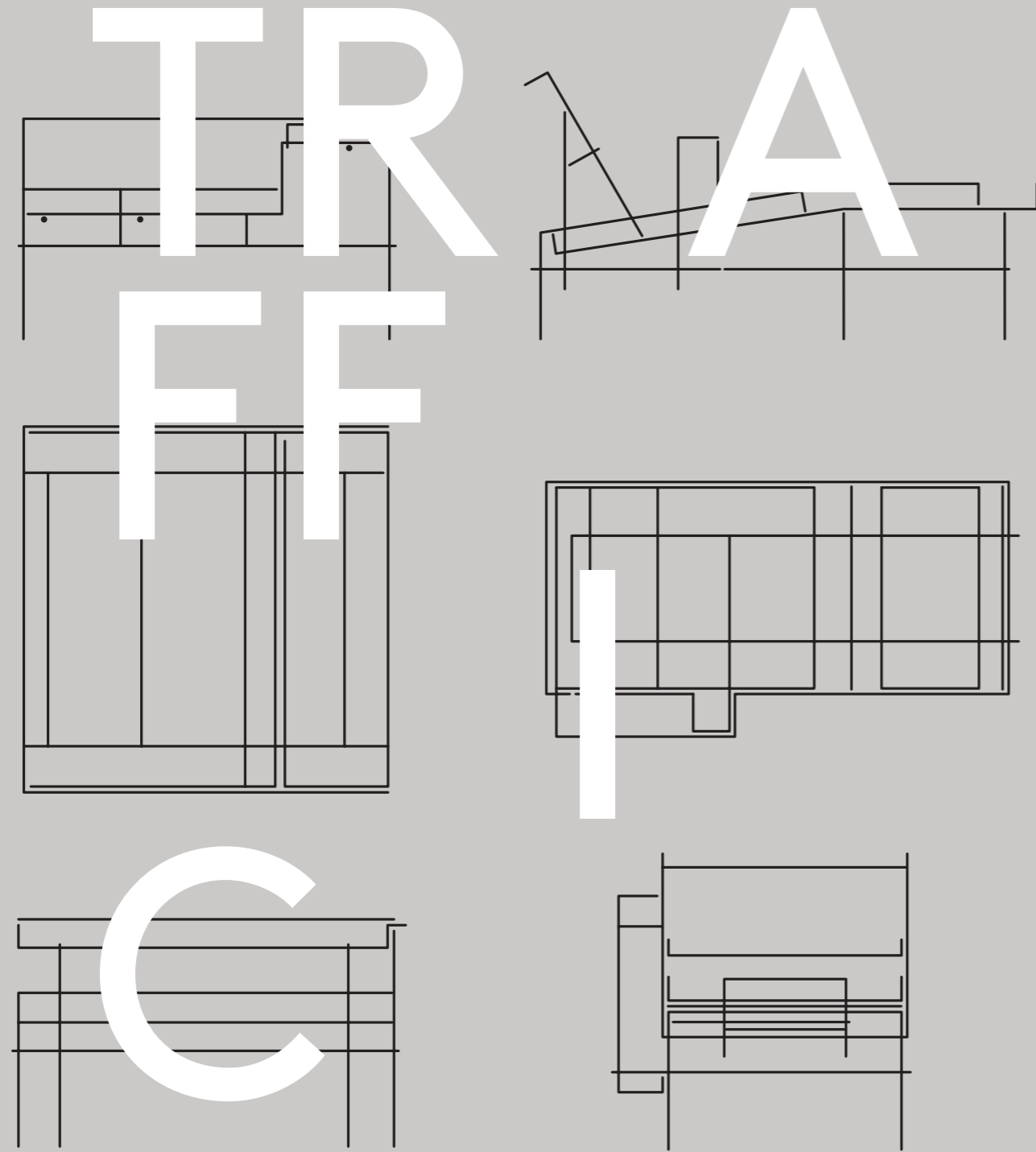


Traffic collection — 2013/2016



design Konstantin Greic





The unassuming simplicity of its conception impart a pleasant casualness

...

Traffic is a collection of furniture using wire and upholstery. The correlation between the three-dimensional line drawing of the metal rod and the geometric volumes of the cushions marks a significant shift from the common connotation of wire furniture. The unassuming simplicity of its conception impart a pleasant casualness. The refinements of detailing and carefully tailored proportions stimulate a resounding elegance. The inherent logic of construction creates a formal grammar which allows for a number of functional declinations to form the Traffic collection: an armchair, a two and three seater sofa, a bench (in two versions), a chaise longue, and a platform. All pieces are available with upholstery in fabric or leather, while the metal structure is powder coated in high gloss colours. Versions for outdoor use also available. The collection has enhanced also with three low tables and a table.

design Konstantin Grcic



The inherent logic of construction creates a formal grammar which allows for a number of functional declinations to form the Traffic collection

...

Armchair 82 x 80 x h72





La modesta simplicidad de su concepto atribuye al producto una agradable naturaleza

...

Traffic es una colección nacida de la unión del tapizado mullido con la barra de acero. La correlación entre la tridimensionalidad de la barra de acero y las formas geométricas de los cojines indica un cambio significativo respecto al común modo de concebir el mobiliario que usa barras de acero. La modesta simplicidad de su concepto atribuye al producto una agradable naturaleza, mientras el refinamiento de los detalles y la precisa definición de las proporciones dan un sentido de gran elegancia. La coherente lógica constructiva confiere diferentes posibilidades dentro la colección Traffic: un sillón, un sofá de dos y de tres plazas, un banco (de dos versiones), una chaise longue y una plataforma – asiento. Todos los elementos de la colección están disponibles con tapizados en tela o en piel con una estructura metálica barnizada con colores brillantes. Están además disponibles versiones para el exterior. La colección se ha enriquecido también de tres mesitas y de una mesa.



La coherente lógica constructiva confiere diferentes posibilidades dentro la colección Traffic

...

Chaise longue 70 x 155 x h94



La modeste simplicité de son concept donne au produit une agréable naturalité

...

Traffic est une collection née de l'union entre fil d'acier et revêtement rembourré. La relation entre la tridimensionnalité du fil d'acier et les volumes géométriques des coussins trace un changement significatif par rapport à la façon commune de concevoir les ameublements en fil d'acier. La modeste simplicité de son concept donne au produit une agréable naturalité, alors que la finesse des détails et la définition très soignée des proportions lui confèrent une grande élégance. La cohérente logique de construction de cette collection permet d'obtenir plusieurs versions pour la collection même, c'est-à-dire un fauteuil, un canapé à 2 et 3 places, un banc (en deux versions), une chaise longue et un canapé îlot. Tous les éléments de la collection sont disponibles avec revêtement en tissu ou en cuir et avec structure en fil d'acier verni en couleurs brillantes. Versions pour l'extérieur aussi disponibles. La collection s'est enrichie aussi de trois guéridons et d'une table.



La cohérente logique de construction de cette collection permet d'obtenir plusieurs versions pour la collection Traffic

...

Bench 67/132 x 52 x h41





Die optische Leichtigkeit des Produkts lässt es natürlich wirken

...

Traffic ist eine Kollektion, die aus der Verbindung von Stahldraht und Polstern entstanden ist. Diese Verbindung zwischen dem dreidimensionalen Drahtgestell und den geometrischen Kissen ist nämlich eine neue Weise, Möbel aus Stahldraht zu entwerfen. Die optische Leichtigkeit des Produkts lässt es natürlich wirken, während die raffinierten Details ihm eine grosse Eleganz verleihen. Die koerente Bildlogik dieser Kollektion erlaubt deshalb verschiedene Ausführungen zu haben: einen Sessel, einen Zwei- und Dreisitzer, eine Bank (in zwei Ausführungen), ein Chaise Longue und eine Sofa-Sitzinsel. Alle Kollektionselemente sind mit Bezug aus Stoff oder aus Leder und mit lackiertem (in glänzenden Farben) Gestell lieferbar. Versionen für den Aussenbereich lieferbar. Die Kollektion hat sich auch durch drei niedrige Tische und einen Tisch bereichert.





Die koerente Bildlogik dieser
Kollektion erlaubt deshalb verschiedene
Ausführungen zu haben

...

Sofa 134 x 80 x h72







La modesta semplicità del suo concept attribuisce al prodotto una piacevole naturalezza

...

Traffic è una collezione nata dall'unione dei rivestimenti propri degli imbottiti con il tondino di metallo. La correlazione tra la tridimensionalità del tondino e i volumi geometrici dei cuscini segna un cambiamento significativo rispetto al comune modo di concepire gli arredi in tondino. La modesta semplicità del suo concept attribuisce al prodotto una piacevole naturalezza, mentre la raffinatezza dei dettagli e l'accurata definizione delle proporzioni conferiscono un senso di grande eleganza. La coerente logica costruttiva crea una grammatica formale che consente molteplici declinazioni all'interno della collezione Traffic: una poltrona, un divano a due e a tre posti, una panca (in due versioni), una chaise longue e un'isola. Tutti gli elementi della collezione sono disponibili con un rivestimento in tessuto o in pelle e con una struttura metallica verniciata con colori lucidi. Sono inoltre disponibili versioni per esterno. La collezione si è arricchita anche di tre tavolini e un tavolo.



La coerente logica costruttiva crea una grammatica formale che consente molteplici declinazioni all'interno della collezione

...

Platform 94 x 94 x h57





Traffic technical info

Armchair

Sofa
Benches
Material: frame in steel rod, painted in polyester powder or cataphoretically-treated and painted in polyester powder. Cushions in expanded polyurethane with removable cover in fabric (Kvadrat "Steelcut Trio" or Polyhedra for outdoors) or in leather. Tablet in acrylic stone also available. Versions for outdoor use available.

Chaise longue

Platform-seating
Material: frame in steel rod, painted in polyester powder; cushions in expanded polyurethane with removable cover in fabric (Kvadrat "Steelcut Trio") or in leather. Tablet in acrylic stone.

Low tables

Material: frame in steel rod, painted in polyester powder or cataphoretically-treated and painted in polyester powder. Top in acrylic stone. Versions for outdoor use available.

Table

Pair of tresles.
Material: frame in steel rod, painted in polyester powder. Top in painted MDF.

Sillón

Sofá
Bancos
Material: estructura en barra de acero barnizado poliéster o barnizado poliéster y tratado anti-óxido. Cojines desenfundables en espuma de poliuretano tapizado en tejido (Kvadrat "Steelcut Trio" o Polyhedra para el exterior) o en piel. Disponible también bandeja en piedra acrílica. Disponible versiones para el exterior.

Chaise longue

Plataforma-asiento
Material: estructura en barra de acero barnizado poliéster; cojines en espuma de poliuretano tapizado en tejido (Kvadrat "Steelcut Trio") o en piel, desenfundables. Bandeja en piedra acrílica.

Mesitas

Material: estructura en barra de acero barnizado poliéster o tratado anti óxido y barnizado poliéster. Tablero en piedra acrílica. Disponibles versiones para el exterior.

Mesa

Par de caballetes
Material: estructura en barra de acero barnizado poliéster. Tablero en MDF barnizado.

Fauteuil

Canapés
Banquettes
Matériaux: structure en fil d'acier verni en polyester ou traité en cataphorese et verni en polyester. Coussins dehoussables en polyurethane expansé, revêtû en tissu (Kvadrat "Steelcut Trio" ou Polyhedra pour l'extérieur) ou en cuir; disponible aussi avec tablette en pierre acrylique. Versions pour l'extérieur disponibles.

Chaise longue

Petit-relax
Matériaux: structure en fil d'acier verni en polyester; coussins dehoussables en polyuréthane expansé, revêtû en tissu (Kvadrat, "Steelcut Trio") ou en cuir. Tablette en pierre acrylique.

Guéridons

Matériaux: structure en fil d'acier verni en polyester ou traité en cataphorese et verni en polyester. Plateau en pierre acrylique. Versions pour l'extérieur disponibles.

Table

Paire de treteaux.
Matériaux: structure en fil d'acier verni en polyester. Plateau en MDF verni.

Sessel

Sofa
Sitzbank
Material: Gestell aus Stahl Draht, polyesterlackiert oder rostschutzbehandelt und polyesterlackiert. Abziehbare Kissen aus Polyurethanschaum mit Stoff- (Kvadrat, "Steelcut Trio" oder Polyhedra für den Aussenbereich) oder Lederbezug. Ablage aus Acrylstein separat erhältlich. Versionen für den Aussenbereich lieferbar.

Chaise longue

Sofa-Sitzinsel
Material: Gestell aus polyesterlackiertem Stahl Draht; Abziehbare Kissen aus Polyurethanschaum mit Stoff- (Kvadrat, "Steelcut Trio") oder Lederbezug. Ablage aus Acrylstein.

Niedrige Tische

Material: Gestell aus polyesterlackiertem oder aus rostschutzbehandeltem, polyesterlackiertem Stahl Draht. Tischplatten aus Acrylstein. Versionen für den Aussenbereich lieferbar.

Tisch

Böcke, (Paar).
Material: Gestell aus polyesterlackiertem Stahl Draht. Tischplatten aus lackiertem MDF.

Poltrona

Divano
Panche
Materiale: struttura in tondino di acciaio verniciato poliester e trattato cataforesi. Cuscini sfoderabili in poliuretano espanso rivestiti in tessuto (Kvadrat "Steelcut Trio" o Polyhedra per esterni) o pelle. Disponibile anche tavoletta in pietra acrilica. Disponibili versioni per esterno.

Chaise longue

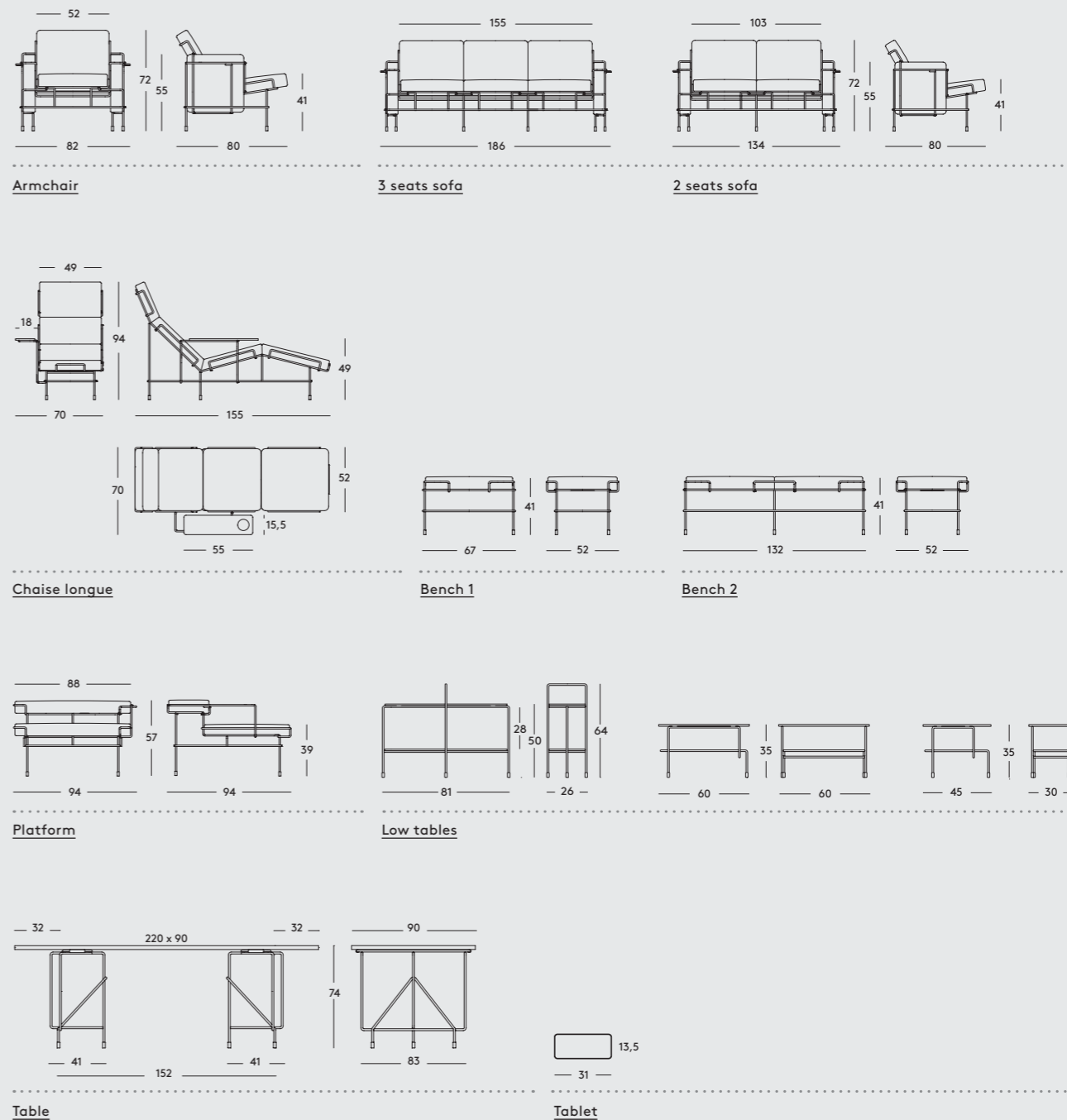
Piattaforma-seduta
Materiale: struttura in tondino di acciaio verniciato poliester; cuscini sfoderabili in poliuretano espanso rivestito in tessuto (Kvadrat "Steelcut Trio") o pelle. Tavoletta in pietra acrilica.

Tavolini

Materiale: struttura in tondino di acciaio verniciato poliester o trattato cataforesi e verniciato poliester. Piano in pietra acrilica. Disponibili versioni per esterno.

Tavolo

Coppia di cavalletti.
Materiale: struttura in tondino di acciaio verniciato poliester. Piano in MDF verniciato.



Armchair, Sofa, Platform, Chaise longue, Benches



Frame: White 5011
Fabric: Orange F-088 (533)
Tablet: White



Frame: White 5011
Fabric: Light Blue F-222 (983)
Tablet: White



Frame: White 5011
Fabric: Beige F-266 (205)
Tablet: White



Frame: White 5011
Fabric: Green F-354 (953)
Tablet: White



Frame: White 5011
Fabric: Yellow F-578 (453)
Tablet: White



Frame: White 5011
Fabric: Light Grey F-741 (133)
Tablet: White



Frame: White 5011
Leather: Brown L-0111
Tablet: White



Frame: White 5011
Leather: Cream White L-0706
Tablet: White



Frame: Black 5013
Fabric: Dark Brown F-521 (383)
Tablet: Anthracite Grey



Frame: Black 5013
Leather: Anthracite Grey L-0060
Tablet: Anthracite Grey



Frame: Mahogany Brown 5015
Fabric: Brown F-530 (353)
Tablet: Dark Green



Frame: Mahogany Brown 5015
Leather: Brown L-0111
Tablet: Dark Green



Frame: Mahogany Brown 5015
Leather: Dark Brown L-0752
Tablet: Dark Green



Frame: Sepia Brown 5016
Fabric: Yellow F-578 (453)
Tablet: Anthracite Grey



Frame: Sepia Brown 5016
Leather: Brown L-0111
Tablet: Anthracite Grey



Frame: Sepia Brown 5016
Leather: Dark Brown L-0752
Tablet: Anthracite Grey



Frame: Dark Green 5021
Fabric: Green F-354 (953)
Tablet: Dark Green



Frame: Dark Green 5021
Leather: Brown L-0111
Tablet: Dark Green



Frame: Dark Green 5021
Leather: Dark Brown L-0752
Tablet: Dark Green



Frame: Green Blue 5017
Fabric: Light Blue F-222 (983)
Tablet: White



Frame: Signal Red 5019
Fabric: Orange F-088 (533)
Tablet: Anthracite Grey

Armchair, Sofa, Benches



Frame: White 5011
Fabric: Turquoise F-227
Tablet: White



Frame: White 5011
Fabric: Blue F-257
Tablet: White



Frame: White 5011
Fabric: White F-737
Tablet: White



Frame: White 5011
Fabric: Black F-769
Tablet: White

Low tables



Frame: White 5011
Top: White



Frame: White 5011
Top: White



Frame: Black 5013
Top: Anthracite Grey



Frame: Mahogany Brown 5015
Top: Green



Frame: Sepia Brown 5016
Top: Anthracite Grey



Frame: Green Blue 5017
Top: White



Frame: Signal Red 5019
Top: Anthracite Grey



Frame: Dark Green 5021
Top: Green

Table

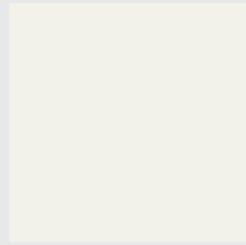


Frame: White 5108
Top: White 8500

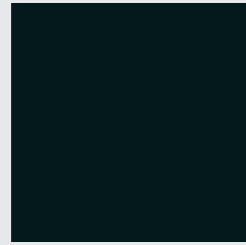


Frame: Black 5140
Top: Black 8510

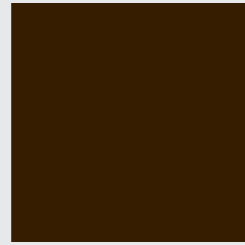
Traffic finishes



Frame: White 5011



Frame: Black 5013



Frame: Mahogany Brown 5015



Frame: Sepia Brown 5016



Frame: Dark Green 5021



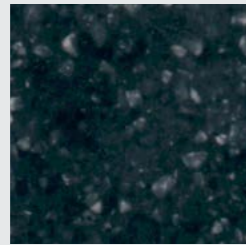
Frame: Green Blue 5017



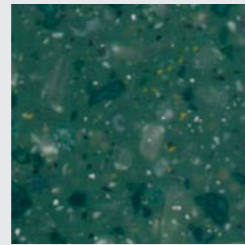
Frame: Signal Red 5019



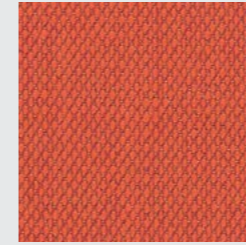
Tablet: White



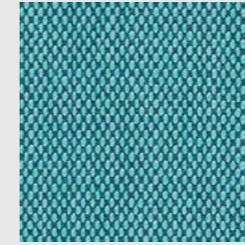
Tablet: Anthracite Grey



Tablet: Dark Green



Fabric: F-088 Orange (533) Steelcut Trio



Fabric: F-222 Light Blue (983) Steelcut Trio



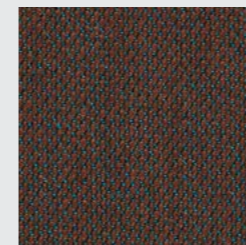
Fabric: F-266 Beige (205) Steelcut Trio



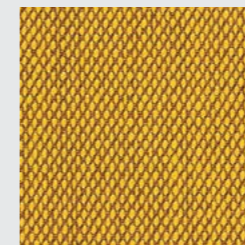
Fabric: F-354 Green (953) Steelcut Trio



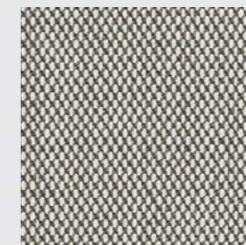
Fabric: F-521 Dark Brown (383) Steelcut Trio



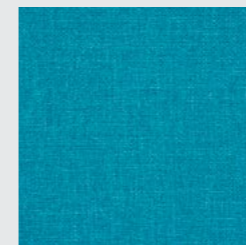
Fabric: F-530 Brown (353) Steelcut Trio



Fabric: F-578 Yellow (453) Steelcut Trio



Fabric: F-741 Light Grey (133) Steelcut Trio



Fabric: F-227 Turquoise Polyhedra



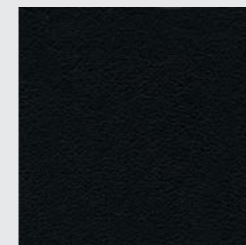
Fabric: F-257 Blue Polyhedra



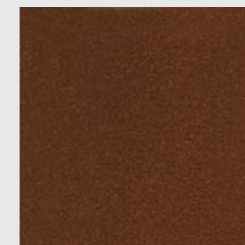
Fabric: F-737 White Polyhedra



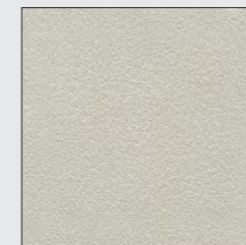
Fabric: F-737 White Polyhedra



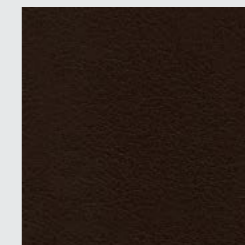
Leather: L-0060 Anthracite Grey



Leather: L-0111 Brown



Leather: L-0706 Cream White



Leather: L-0752 Dark Brown



All rights reserved.
No part of this
publication may be
reproduced, stored
in a retrieval system
or transmitted, in
any form or by any
means, electronic,
mechanical,
photocopying,
recording or
otherwise, without
the prior permission
of Magis Spa.
Magis reserves the
right to introduce
any changes to its
own models, without
prior notice.

Graphic design:
Designwork
Photography:
ContrattiCompany
Alessandro Paderni
Tom Vack

@Magis Spa 2016

Magis Spa
via Triestina, Accesso E
Z.l. Ponte Tezze
30020 Torre di Mosto
Ve - Italia
T +39 0421 319600
F +39 0421 319700
info@magisdesign.com
magisdesign.com

